

TRANSFORMING
MATERIALS
INTO VALUE

Figures that count



1607

Start of business activities. Family-run business since 1996 – independent & strong

400

Employees across all global sites.

2

Production sites. Quality and flexibility thanks to a high level of vertical integration.

80%

Export business.

5

Subsidiaries across the globe. Proximity to customers and their markets.

14,000

Items in stock in 2017. Replacement parts are available without delay.

400

Tests annually. Broad & in-depth industry know-how.

97 million €

Total sales in 2017.

70

Countries on BHS' shipment and service list. Global vision & global operation.

500

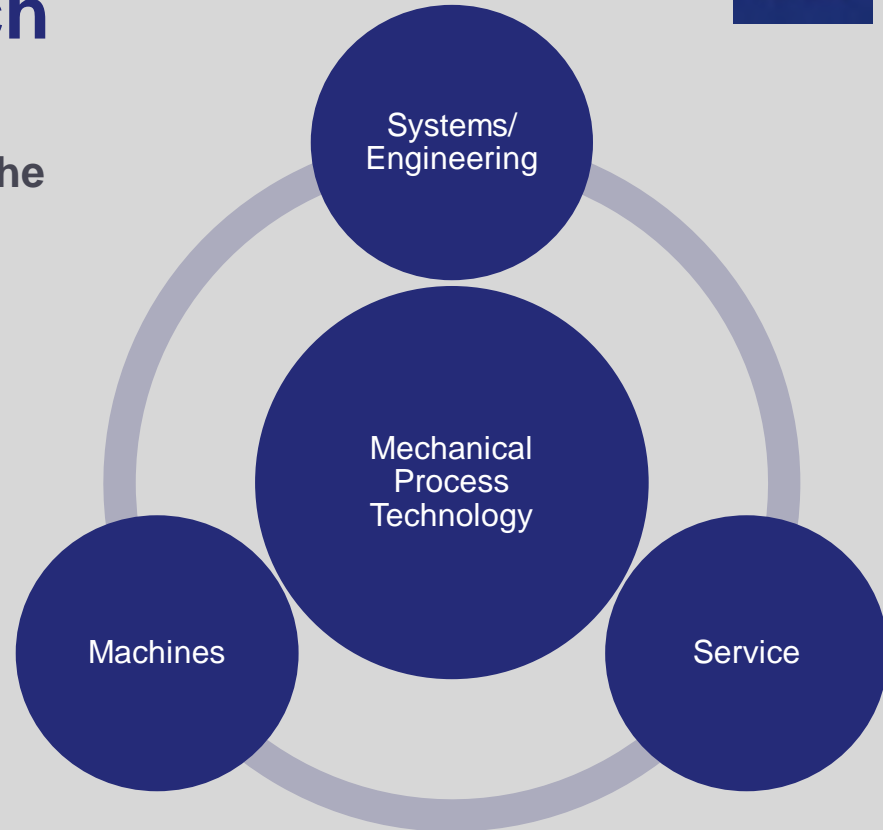
Machines & systems sold in 2017.

We take a holistic approach to the industry

BHS offers process engineering solutions in the areas of:

- **Mixing**
- **Crushing**
- **Recycling**
- **Solid-liquid-separation**

Our wide range of services caters to the needs of customers across the world.



Building a broad service portfolio since 1607



First record – iron smelting plant and hammer mills

1607



Production of crushers

1912

BHS-Sonthofen GmbH becomes a legally independent entity.

1996



Founding of a subsidiary in Charlotte/USA

1998



Founding of subsidiaries in Hyderabad/India, Newport/Australia, Moscow/Russia

2007-2015

1888

Production of concrete mixers



1953

Production of filters



1997

Production of recycling machines



2001

Founding of a subsidiary in Tianjin/China



2018

Acquisition of AVA



International presence provides foundation for individual customer care



■ Company location
■ Production location





Our process technology expertise

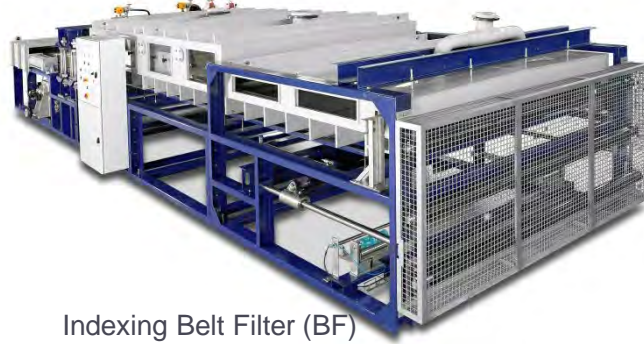


Experts in solid-liquid-separation
– For over 60 years

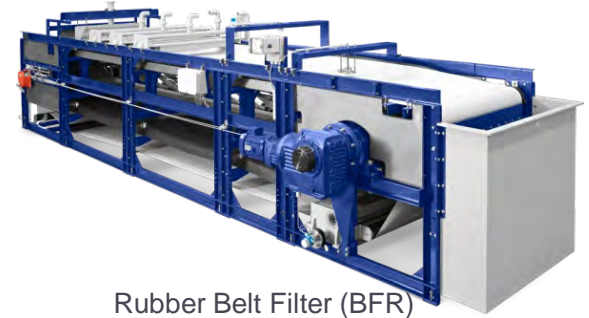




Rotary Pressure Filter (RPF)



Indexing Belt Filter (BF)



Rubber Belt Filter (BFR)



Candle Filter (CF)



Pressure Plate Filter (PF)



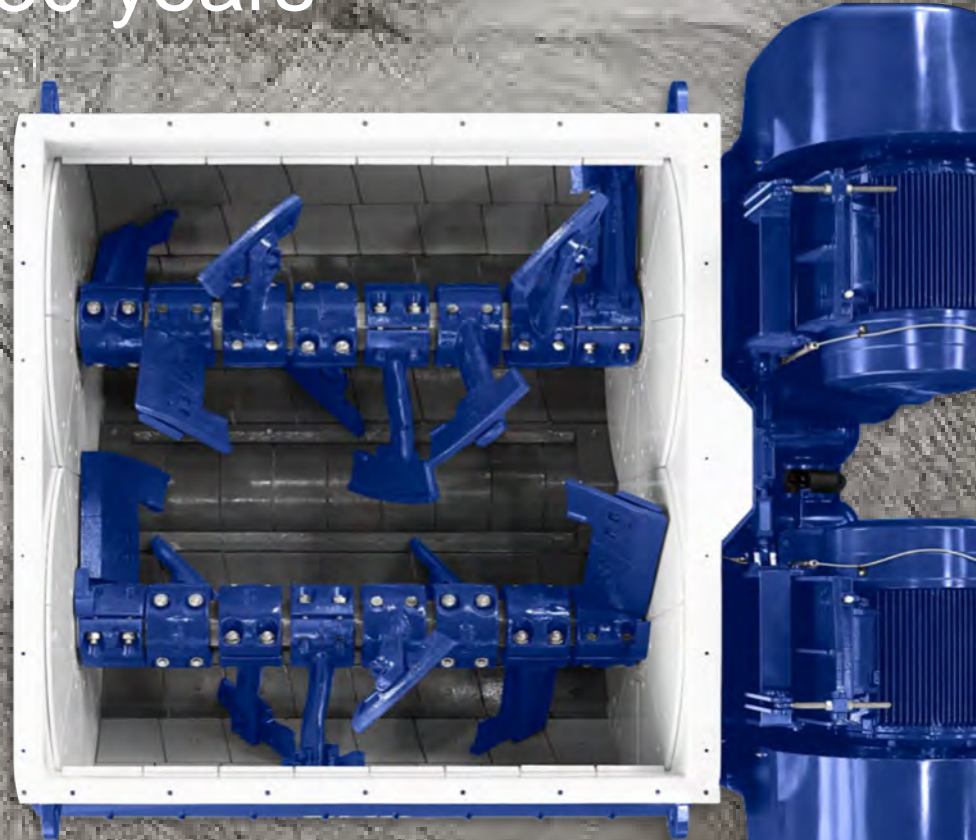
Autopress (AP)



Experience built over more than 60 years.

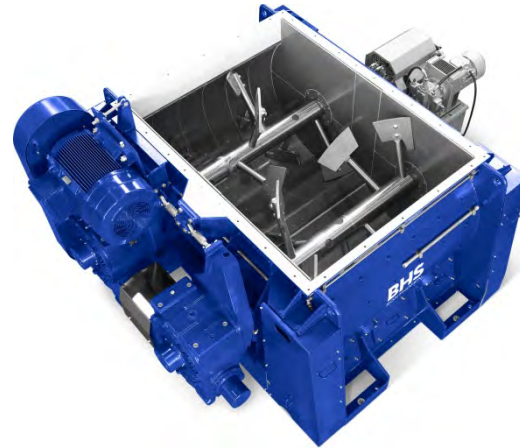
- Basic chemicals
- Fine chemicals
- Petrochemicals
- Pharmaceuticals
- Food
- Power plants
- Mining
- Industrial waste water
- Oil & gas
- Plastics
- ...

Excellent mixture homogeneity –
Guaranteed for over 130 years

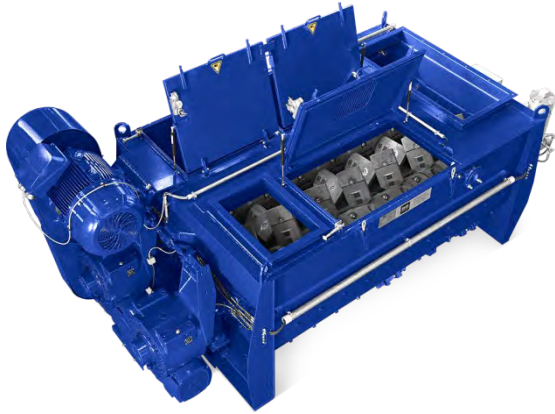




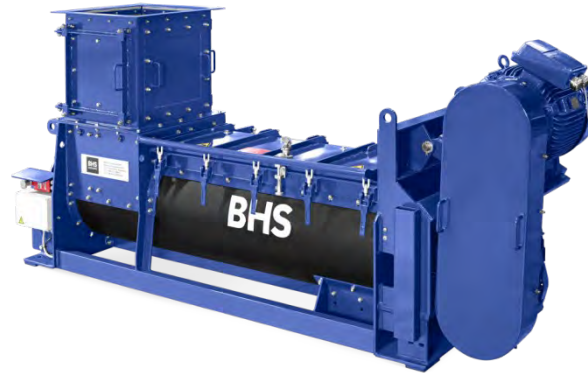
Twin-Shaft Batch Mixer (DKX)



Dry Powder Batch Mixer (DMX)



Twin-Shaft Continuous Mixer (LFK)



Single-Shaft Continuous Mixer (MFKG)

The construction materials industry – Our home turf since 1888.

- Ready-mixed concrete
- Precast concrete
- Sand-lime brick
- Concrete paving blocks
- Dry mortar
- Cement
- Landfill building materials
- Asphalt
- Fly ash
- Backfilling & overburden
- Hydro dam concrete
- High-performance concrete
- ...



High throughput rates
– Day after day





Rotor Centrifugal Crusher (RSMX)



Rotor Impact Mill (RPM & RPMF)



Impact Crusher (PB) & Impact Mill (PM)

The construction materials industry – Our home turf since 1888.

- Aggregates
- Sand
- Gravel
- Slag
- Construction waste
- Glass
- Burnt lime
- Dry mortar sand
- Granulated asphalt
- ...



Generating fresh value from waste





Universal-Shredder (NGU)



Rotary Shear (VR) & Pre-Shredder (VSR)



SpeedCut Granulator (NGV)



Rotorshredder (RS)



Rotor Impact Mill (RPMV & RPMX)



Biogrinder (RBG)



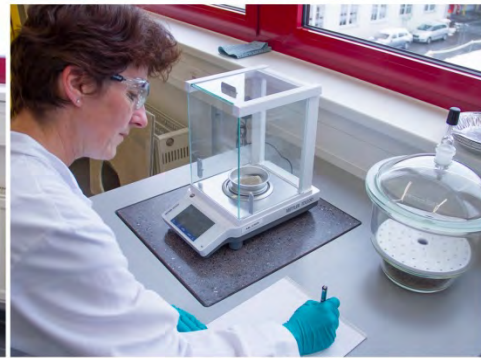
Over 20 years of recycling expertise.

- Electrical & electronic waste
- Shredder residues
- Ash from waste incineration
- Tires
- Refuse-derived fuels (RDF)
- Domestic & commercial waste
- Slags & drosses
- Metal composites
- Aluminum
- Biogas generation
- Paper
- Data media
- Plastics
- Bulky waste
- ...

We test, analyze and provide consultation

Based on the test findings, we design a process technology solution tailored to your needs.





Comprehensive support

We support you throughout the entire life cycle of your BHS process technology solution.



Consulting & service

- Investment consulting
- User training
- Commissioning
- Maintenance
- Servicing
- Replacement parts
- Retrofitting
- Emergency service
- Modernization measures
- ...

We look forward to being of service to you!



Get in touch
with us

