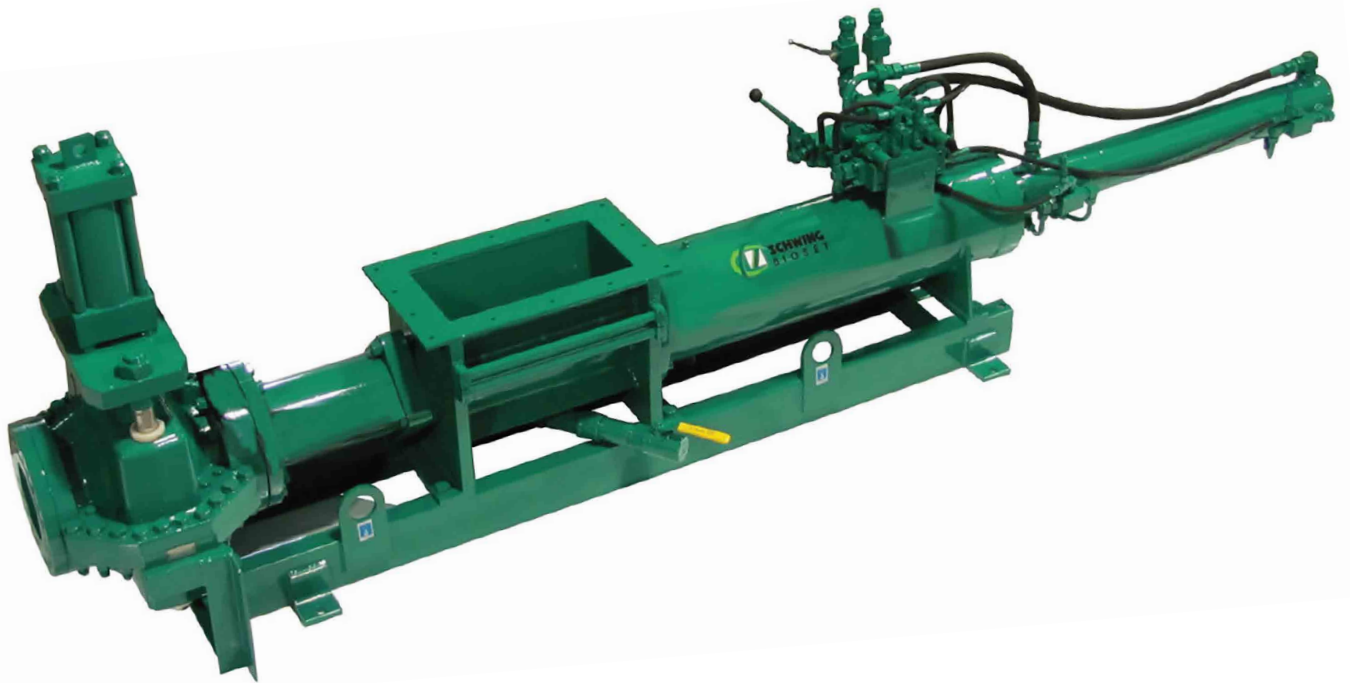


Piston Pumps

SP Series Biomass & Screenings Pumps



The SP Series piston pumps by Schwing Bioaset convey the most difficult-to-handle material generated at wastewater treatment and biomass plants

| SP Series | 2010 | | 2020 | | 3020 | |
|-------------------------------|-----------------|--------------|-----------------|---------------|-----------------|---------------|
| | US | SI | US | SI | US | SI |
| Displacement per Stroke | 4.14 gal | 15.7 L | 8.29 gal | 31.4 L | 18.7 gal | 70.7 L |
| Cylinder Stroke Length | 39.4 | 1,000 mm | 78.7 in | 2,000 mm | 78.7 in | 2,000 mm |
| Hydraulic Cylinder (Bore/Rod) | 4.92 in/3.15 in | 125 mm/80 mm | 7.87 in/5.51 in | 200 mm/140 mm | 7.87 in/5.51 in | 200 mm/140 mm |
| Material Cylinder Diameter | 7.87 in | 200 mm | 7.87 in | 200 mm | 11.8 in | 300 mm |
| Inlet Opening | 11 x 21 in | 280 x 533 mm | 11 x 39 in | 280 x 1000 mm | 13.75 x 39 in | 350 x 1000 mm |
| Outlet Opening | 7.87 in | 200 mm | 8.5 in | 216 mm | 11.4 in | 289 mm |

Features of the SP Series Piston Pumps

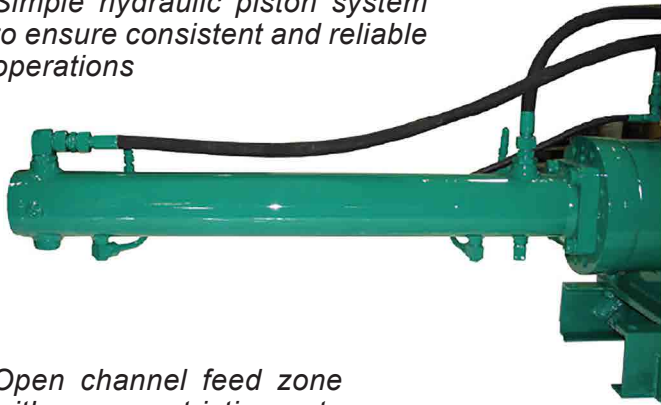
- Pumps non-flowable materials
- Utilizing pipeline conveyance contains odors and spills and the flexibility of pipe layout simplifies the plant design
- Powered by a self-contained hydraulic power unit with integral control pane
- Uses hydraulic switching circuitry, thus requiring only two hydraulic hose connections, with no need for electrical proximity type switches to operate the pump
- Ability to cross pressure boundaries and eliminate lock-hopper systems (which are costly and complex)

Optional Accessories

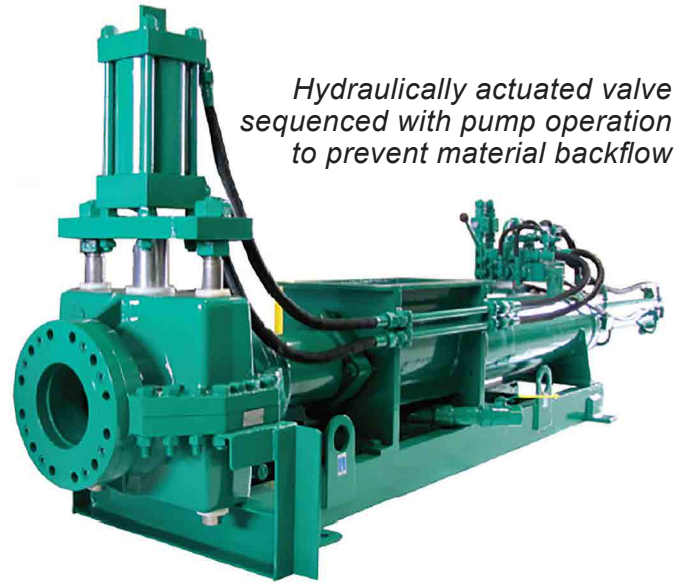
- PLC Control Logic
- Integral Motor Starters
- Feed Screws and Hoppers
- Level Sensing & Automatic Control
- Synchronized Discharge Valve (eliminates backflow)



Simple hydraulic piston system to ensure consistent and reliable operations



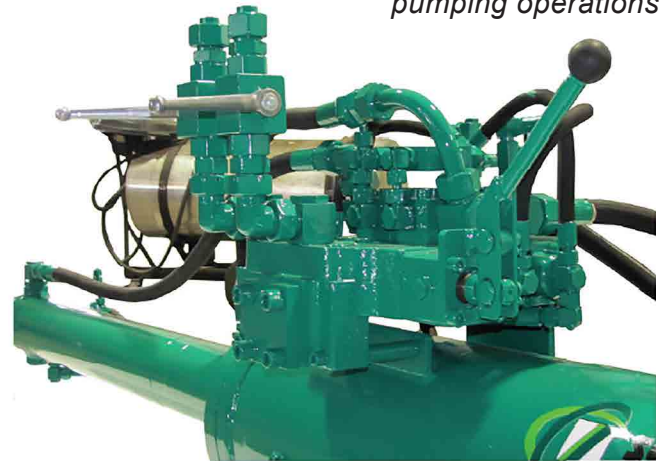
Hydraulically actuated valve sequenced with pump operation to prevent material backflow



Open channel feed zone with no restrictions to eliminate material bridging issues



Hydraulic control valve that ensures proper sequencing of pumping operations



Drain to remove excess liquid in pumped material

A Name You Can Trust

Screw Press Dewatering



SBI's Screw Press provides excellent dewatering capabilities with a system that is virtually maintenance free, and can be run unattended.

Sliding Frame



Sliding frame systems, whether used as truck receiving, truck loading, or as intermediate storage, offer a flexible means of storing dewatered solids while eliminating bridging. The flexible design allows for various process requirements.

Fluid Bed Dryer



Schwing Bioset's fluid bed dryer offers a thermally efficient means of producing dust-free Class A biosolids. The automated system allows for unattended operation, and produces a very simple product to store, transport, and apply.

Container Wagon



Due to plant layout restrictions, many facilities face the challenge of transporting solids from one loading / unloading point into and out of the process stream. The SBI Container Wagon system provides a variety of solutions.

Operating & Marketing Services



Schwing Bioset's partnership with Biosolids Distribution Services Inc. creates the unique ability to offer complete handling solutions with engineering, equipment, and distribution of Class A biosolids, responsibly offered by a single provider.

Bioset Process



Schwing Bioset offers the Bioset lime stabilization process, which is approved to EPA's 503 regulations. The Bioset process provides municipalities a low cost Class A system that is affordable to operate and easy to maintain.

Contact Information

Wisconsin:

350 SMC Drive
Somerset, WI 54025
TEL 715-247-3433
FAX 715-247-3438
www.schwingbioset.com

Connecticut:

98 Mill Plain Ste. 2B
Danbury, CT 06811
TEL 203-744-2100
FAX 203-744-2837

